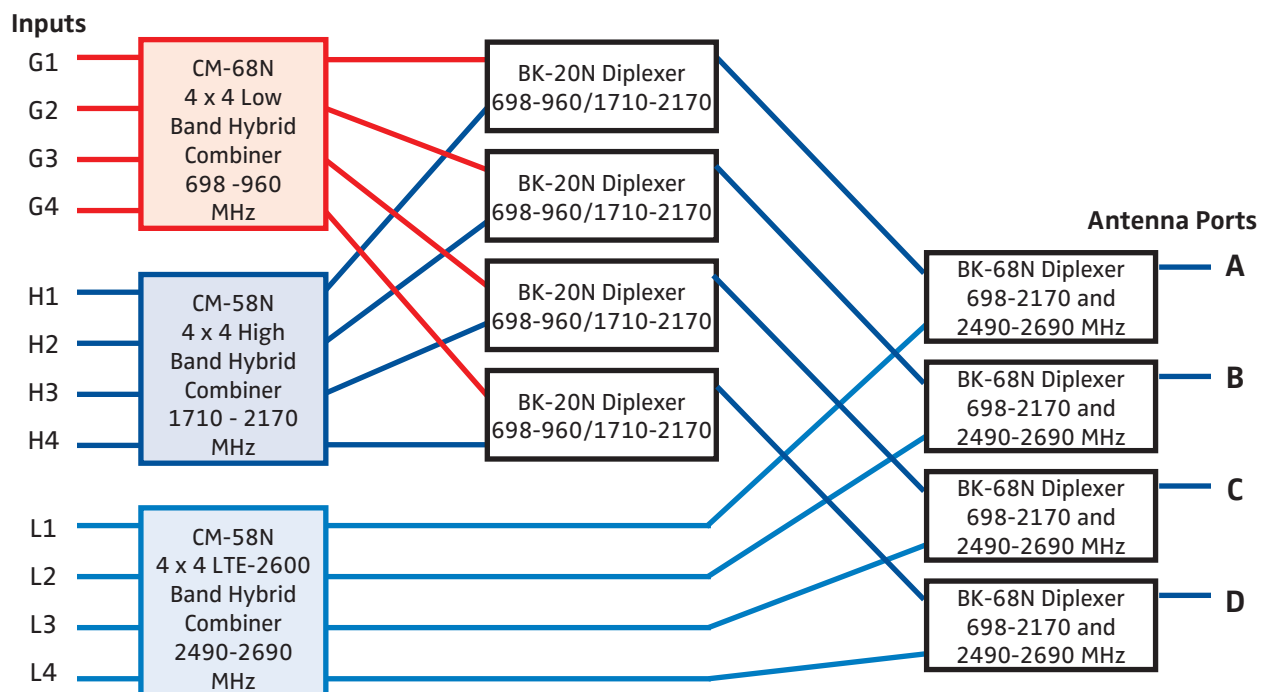


## DCC Series® - Preliminary Data

- ◆ Input bands for Cellular, WiFi, WiMAX & LTE-2600: 698 to 2700 MHz
- ◆ 12 Inputs to 4 Combined Outputs
- ◆ Guaranteed PIM, and Low Loss
- ◆ High Reliability, RoHS
- ◆ Standard 4RU EIA Rack (7")



These broadband RF Combiner Boxes have been designed to meet the neutral host needs of in-building systems, with low passive intermodulation (PIM). The system combines up to 12 wireless carriers in three operating bands to 4 multiple antenna feeds or distribution cables. Through the use of three 4 x 4 hybrid networks and 8 diplexers, the total loss for each path is less than 1.5 dB, provided all four outputs are utilized. Typical isolation between inputs in the same band is 25 dB, between bands 58 dB. Input/output connectors have been separately grouped for convenience. (08/12)



<b>KM-92D:</b>	7-16 (f) in; N (f) out to DAS
<b>KM-92N:</b>	N (f) in; N (f) out to DAS
Inputs G1 to G4:	698 - 960 MHz, GSM Band
Inputs H1 to H4:	1710 - 2170 MHz, DCS Band
Inputs L1 to L4:	2490 - 2700 MHz, High Band
Input Isolation:	Within Band: >22 dB Between Bands: >55 dB
Input Return Loss:	>19 dB (>23 dB typical)
Outputs A, B, C, D:	698 - 2700 MHz
Coupling (In-Out):	7 ± 0.5 dB (all paths)
Power per input:	<60W avg., 3 kW peak
Total power in:	<300W average
Impedance:	50Ω nominal
Environment:	-15°C to +65°C, Indoor
PIM (Intermod):	<-142 dBc (+43dBm x2)
Finish: Housing:	RoHS coated aluminum
Connectors:	Triplate, N or 7-16 mm
Weight:	33 lbs (15 kg) nominal

### Example Outline

